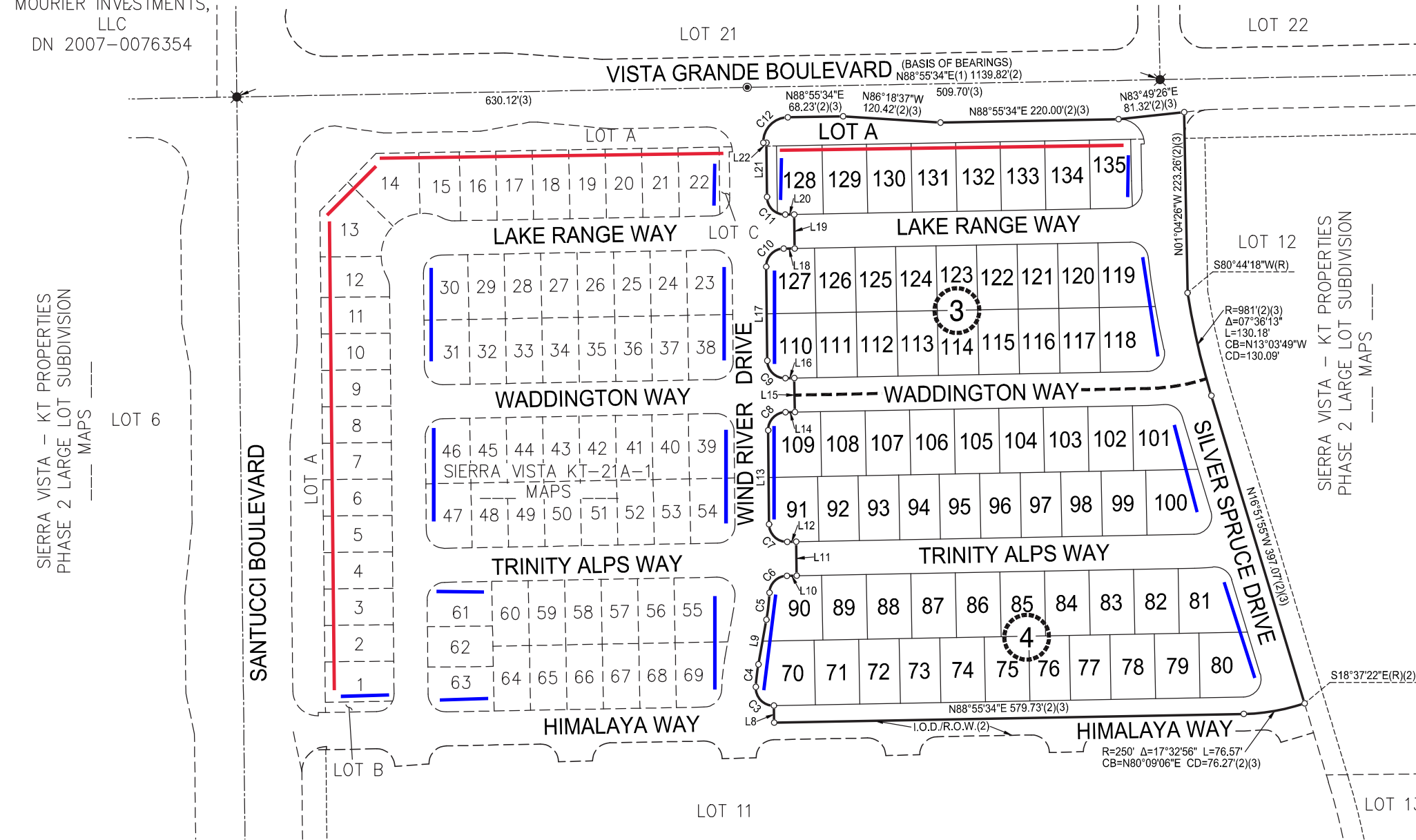


MOURIER INVESTMENTS, LLC
DN 2007-0076354

FEDERICO LARGE LOT FINAL MAP EE
MAPS 6



Line Table

#	BEARING	LENGTH
L8(3)	N1°04'26"W	21.00'
L9(3)	N10°03'55"E	56.08'
L10(3)	N88°55'34"E	12.24'
L11(3)	N1°04'26"W	42.00'
L12(3)	N88°55'34"E	11.00'
L13(3)	N0°38'17"W	116.00'
L14(3)	N88°55'34"E	11.65'
L15(3)	N1°04'26"W	42.00'
L16(3)	N88°55'34"E	11.00'
L17(3)	N0°38'17"W	116.00'
L18(3)	N88°55'34"E	13.65'
L19(3)	N1°04'26"W	42.00'
L20(3)	N88°55'34"E	11.00'
L21(3)	N0°38'17"W	67.04'
L22(3)	N89°21'43"E	4.00'

CURVE TABLE

#	RADIUS	DELTA	LENGTH	CHORD BEARING	CHORD LENGTH
C3(2)(3)	22'	94°07'46"	36.14'	N44°00'33"W	32.21'
C4(3)	229'	07°00'35"	28.02'	N06°33'38"E	26.00'
C5(3)	271'	07°05'08"	33.51'	N06°31'21"E	33.49'
C6(3)	22'	85°56'46"	33.00'	N45°57'11"E	29.99'
C7(3)	22'	90°26'09"	34.72'	N45°51'21"W	31.23'
C8(3)	22'	89°33'51"	34.39'	N44°08'39"E	30.99'
C9(3)	22'	90°26'09"	34.72'	N45°51'21"W	31.23'
C10(3)	22'	89°33'51"	34.39'	N44°08'39"E	30.99'
C11(3)	22'	90°26'09"	34.72'	N45°51'21"W	31.23'
C12(3)	31'	89°33'51"	48.46'	N44°08'39"E	43.67'

NOTES:

1. THE TOTAL AREA OF THIS SUBDIVISION IS 9.54 ACRES +/-, GROSS, CONSISTING OF 67 RESIDENTIAL LOTS, 1 LANDSCAPE LOT.
2. ALL CURVES ARE DIMENSIONED WITH RADIUS, DELTA, ARC LENGTH, CHORD BEARING AND CHORD LENGTH. CHORD LENGTHS MAY CONTAIN SOME ROUNDING ERROR. DISTANCES SHOWN HEREON ARE IN FEET AND DECIMALS THEREOF AND ARE "GROUND" DISTANCES.
3. A PRELIMINARY SOILS REPORT WAS PREPARED BY WALLACE KUHL & ASSOCIATES DATED FEBRUARY 12, 2018; PROJECT NUMBER WKA NO. 11712.02P AND ON FILE WITH THE CITY OF ROSEVILLE DEVELOPMENT - ENGINEERING DEPARTMENT FILE #308-876.
4. ALL FRONT CORNERS ARE MARKED BY A 1" BRASS MARKER STAMPED "LS 7944" IN THE SIDEWALK ON THE EXTENSION OF SIDE LOT LINES 1.00' FROM THE PROPERTY LINE UNLESS OTHERWISE NOTED.
5. ALL REAR CORNERS AND ANGLE POINTS WILL BE SET WITH A 5/8" REBAR AND PLASTIC CAP STAMPED "LS 7944"
6. A PORTION OF THE I.O.D./R.O.W. ON LOT 10 AS SHOWN AND SO DESIGNATED ON THAT CERTAIN FINAL MAP ENTITLED "SIERRA VISTA - KT PROPERTIES PHASE 2 LARGE LOT SUBDIVISION SUBDIVISION NUMBER PL 15-0192", FILED FOR RECORD ON _____, 2020 IN BOOK _____ OF MAPS, AT PAGE _____, PLACER COUNTY RECORDS, IS FULLY CONTAINED IN THE RIGHT OF WAY SHOWN HEREON.
7. COVENANTS, CONDITIONS AND RESTRICTIONS AFFECTING THE LOTS SHOWN HEREON ARE RECORDED AS DOCUMENT NO. 2020-0042952 OFFICIAL RECORDS OF PLACER COUNTY.

ENHANCEMENT LEGEND

- REAR ENHANCED LOTS
- SIDE ENHANCED LOTS

BASIS OF BEARINGS:

THE BEARING N 88°55'34" E, AS SHOWN BETWEEN FOUND MONUMENTS ALONG THE CENTERLINE OF VISTA GRANDE BOULEVARD AS SHOWN ON THAT CERTAIN FINAL MAP ENTITLED "SIERRA VISTA - KT PROPERTIES PHASE 2 LARGE LOT SUBDIVISION SUBDIVISION NUMBER PL 15-0192" FILED FOR RECORD ON _____, 2020 IN BOOK _____ OF MAPS, AT PAGE _____, PLACER COUNTY RECORDS, DISTANCES SHOWN HEREON ARE GROUND DISTANCES.

REFERENCES:

- (1) EE MAPS 6
- (2) _____ MAPS _____ (SV PH2 LLM)
- (3) _____ MAPS _____ (KT-21A-1)

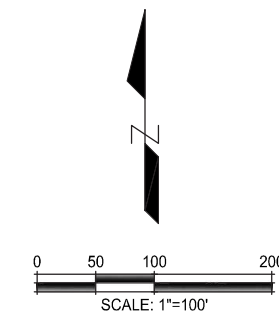
LEGEND

- ⊗ MONUMENT TO BE SET PER (2) COPPERWELD SURVEY MONUMENT WITH CENTER PUNCH IN MONUMENT WELL STAMPED "LS 7944"
- ⊙ SET COPPERWELD SURVEY MONUMENT WITH CENTER PUNCH IN MONUMENT WELL STAMPED "LS 7944"
- | DIMENSION POINT NOTHING FOUND OR SET
- CB CHORD BEARING
- CD CHORD DISTANCE
- (OA) OVERALL
- P.E. PEDESTRIAN EASEMENT
- P.U.E. PUBLIC UTILITY EASEMENT
- (R) RADIAL
- S.F. SQUARE FEET
- () DENOTES RECORD INFORMATION
- ① SHEET NUMBER

02/08/2021

#20088

C-7



ENHANCEMENT EXHIBIT KT 21A 1 & 2

SIERRA VISTA

BEING A SUBDIVISION OF REMAINDER LOT AS SHOWN AND SO DESIGNATED ON THAT CERTAIN FINAL MAP ENTITLED "SIERRA VISTA KT 21A-1", FILED FOR RECORD ON _____, 2020 IN BOOK _____ OF MAPS, AT PAGE _____, PLACER COUNTY RECORDS, SECTION 35, TOWNSHIP 11 NORTH, RANGE 5 EAST, MOUNT DIABLO MERIDIAN.

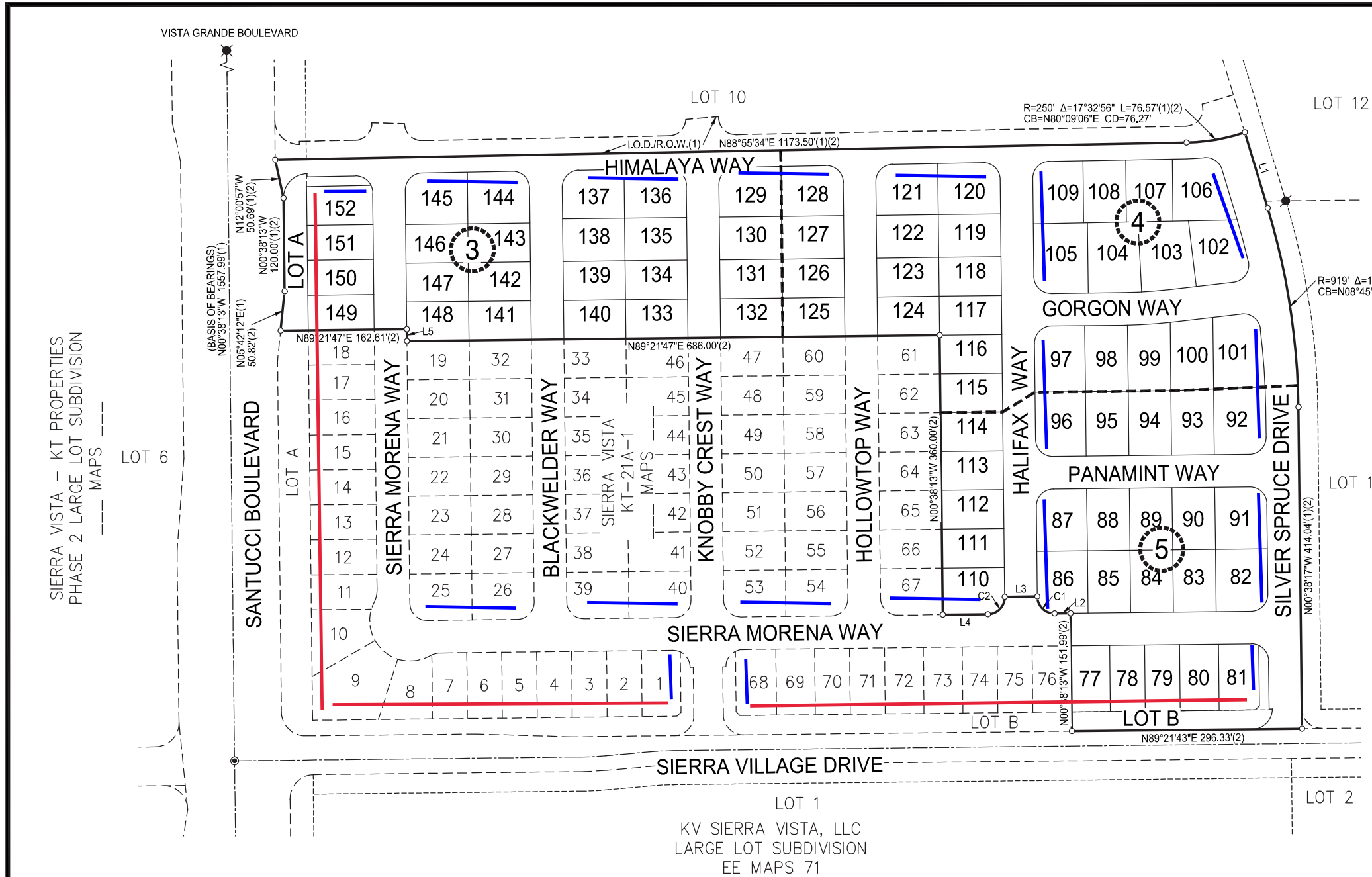
CITY OF ROSEVILLE • PLACER COUNTY • CALIFORNIA

R. E. Y. ENGINEERS, Inc.
Civil Engineers / Land Surveyors
905 Sutter St. Ste 200 Folsom CA 95630
(916) 366-3040 Fax (916) 366-3303

AUGUST 2020

SHEET 2 OF 5

7310.024



LINE TABLE			CURVE TABLE					
#	BEARING	LENGTH	#	RADIUS	DELTA	CHORD LENGTH	CHORD BEARING	CHORD LENGTH
L1(1)(2)	N16°51'55"W	101.77'	C1(2)	22'	90°00'00"	34.56'	N45°38'13"W	31.11'
L2(2)	N89°21'47"E	20.50'	C2(2)	22'	90°00'00"	34.56'	N44°21'47"E	31.11'
L3(2)	N89°21'47"E	42.00'						
L4(2)	N89°21'47"E	58.00'						
L5(2)	N00°38'13"W	15.22'						

- NOTES:**
1. THE TOTAL AREA OF THIS SUBDIVISION IS 11.81 ACRES +/-, GROSS, CONSISTING OF 76 RESIDENTIAL LOTS, 2 LANDSCAPE LOTS.
 2. ALL CURVES ARE DIMENSIONED WITH RADIUS, DELTA, ARC LENGTH, CHORD BEARING AND CHORD LENGTH. CHORD LENGTHS MAY CONTAIN SOME ROUNDING ERROR, DISTANCES SHOWN HEREON ARE IN FEET AND DECIMALS THEREOF AND ARE "GROUND" DISTANCES.
 3. A PRELIMINARY SOILS REPORT WAS PREPARED BY WALLACE KUHL & ASSOCIATES DATED FEBRUARY 12, 2018; PROJECT NUMBER WKA NO. 11712.02P AND ON FILE WITH THE CITY OF ROSEVILLE DEVELOPMENT - ENGINEERING DEPARTMENT FILE #308-876.
 4. ALL FRONT CORNERS ARE MARKED BY A 1" BRASS MARKER STAMPED "LS 7944" IN THE SIDEWALK ON THE EXTENSION OF SIDE LOT LINES 1.00' FROM THE PROPERTY LINE UNLESS OTHERWISE NOTED.
 5. ALL REAR CORNERS AND ANGLE POINTS WILL BE SET WITH A 5/8" REBAR AND PLASTIC CAP STAMPED "LS 7944"
 6. A PORTION OF THE I.O.D./R.O.W. ON LOT 11 AS SHOWN AND SO DESIGNATED ON THAT CERTAIN FINAL MAP ENTITLED "SIERRA VISTA - KT PROPERTIES PHASE 2 LARGE LOT SUBDIVISION SUBDIVISION NUMBER PL 15-0192", FILED FOR RECORD ON _____, 2020 IN BOOK _____ OF MAPS, AT PAGE _____, PLACER COUNTY RECORDS, IS FULLY CONTAINED IN THE RIGHT OF WAY SHOWN HEREON.
 7. COVENANTS, CONDITIONS AND RESTRICTIONS AFFECTING THE LOTS SHOWN HEREON ARE RECORDED AS DOCUMENT NO. 2020-0042952 OFFICIAL RECORDS OF PLACER COUNTY.

ENHANCEMENT LEGEND

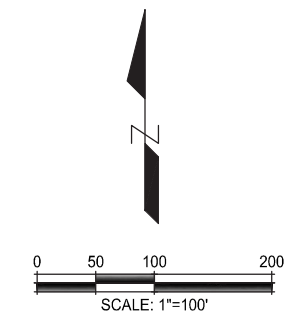
- REAR ENHANCED LOTS
- SIDE ENHANCED LOTS

BASIS OF BEARINGS:
 THE BEARING N 00°38'13" W, AS SHOWN BETWEEN FOUND MONUMENTS ALONG THE CENTERLINE OF SANTUCCI BOULEVARD AS SHOWN ON THAT CERTAIN FINAL MAP ENTITLED "SIERRA VISTA - KT PROPERTIES PHASE 2 LARGE LOT SUBDIVISION SUBDIVISION NUMBER PL 15-0192" FILED FOR RECORD ON _____, 2020 IN BOOK _____ OF MAPS, AT PAGE _____, PLACER COUNTY RECORDS. DISTANCES SHOWN HEREON ARE GROUND DISTANCES.

- REFERENCES:**
- (1) _____ MAPS _____ (SV PH2 LLM)
 - (2) _____ MAPS _____ (KT-21B-1)
 - (3) EE MAPS 6

- LEGEND:**
- ⊗ MONUMENT TO BE SET PER (3) COPPERWELD SURVEY MONUMENT WITH CENTER PUNCH IN MONUMENT WELL STAMPED "LS 7944"
 - ⊙ MONUMENT TO BE SET PER (1)(2) COPPERWELD SURVEY MONUMENT WITH CENTER PUNCH IN MONUMENT WELL STAMPED "LS 7944"
 - ⦿ FOUND 5/8" REBAR WITH PLASTIC PLUG STAMPED "LS 7944"
 - ⊕ SET COPPERWELD SURVEY MONUMENT WITH CENTER PUNCH IN MONUMENT WELL STAMPED "LS 7944"
 - | DIMENSION POINT NOTHING FOUND OR SET
- BNDY BOUNDARY
 CB CHORD BEARING
 CD CHORD DISTANCE
 (OA) OVERALL
 P.E. PASEO EASEMENT
 P.U.E. PUBLIC UTILITY EASEMENT
 (R) RADIAL
 S.F. SQUARE FEET
 () DENOTES RECORD INFORMATION
 (1) SHEET NUMBER

02/08/2021
 #20088
 C-17



ENHANCEMENT EXHIBIT KT 21B 1 & 2

SIERRA VISTA

BEING A SUBDIVISION OF REMAINDER LOT AS SHOWN AND SO DESIGNATED ON THAT CERTAIN FINAL MAP ENTITLED "SIERRA VISTA KT 21B-1 SUBDIVISION NO. PL17-0305", FILED FOR RECORD ON _____, 2020 IN BOOK _____ OF MAPS, AT PAGE _____, PLACER COUNTY RECORDS, SECTION 34, TOWNSHIP 11 NORTH, RANGE 5 EAST, MOUNT DIABLO MERIDIAN.

CITY OF ROSEVILLE • PLACER COUNTY • CALIFORNIA
 R. E. Y. ENGINEERS, Inc.
 Civil Engineers / Land Surveyors
 905 Sutter St. Ste 200 Folsom CA 95630
 (916) 366-3040 Fax (916) 366-3303
 AUGUST 2020
 SHEET 2 OF 6 7310.024